



Optimize clinical workflow capabilities
of your Aquilion Prime

VeloCT Upgrade

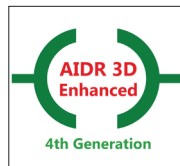


Canon Medical System's new VeloCT upgrade is designed to improve clinical and operational capabilities of your existing Aquilion™ Prime.

STANDARD

AIDR 3D Enhanced Improved Balance Between Image Quality and Dose

The 4th generation of the Adaptive Iterative Dose Reduction that is easy to use and integrated.



AIDR 3D Enhanced

SURE^{KV}

Automated kV Selection for Every Procedure

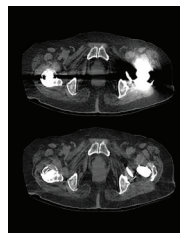
SURE^{KV} is integrated into SURE Exposure, enabling automated kV selection based on the patient's size and the clinical task.



SURE^{KV}

Helical SEMAR Improved Visualization of Bone and Soft Tissue

Single Energy Metal Artifact Reduction utilizes a raw data reconstruction technique to reduce artifacts caused by metal. It improves the visualization of soft tissue and bone structure surrounding implants.



Helical SEMAR

SURE^{Position}

Fast Scans in Time-Critical Situations

Accurately centers the patient within the gantry from the user console without repeating the scanogram.



SURE^{Position}

OPTIONAL

SURE^{Subtraction}

Advanced Anatomical Registration Algorithms

SURE^{Subtraction} Angio automatically removes bone, calcium and stents and can create Iodine maps.

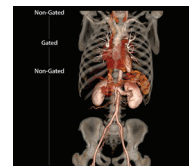


SURE^{Subtraction}

vHP3

Automatically Adapt Scan Parameters to the Clinical Task

vHP 3 technology improves image quality, scan speed and dose with 3 parameter settings within one acquisition.



vHP3

EFOV

(Extended Field-Of-View)

See More Anatomy

See structures outside the standard FOV with 700 cm extended field-of-view.



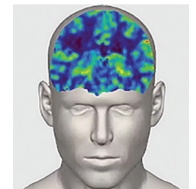
EFOV

Shuttle Perfusion

Extended CTP Coverage

4D Shuttle Scanning* allows whole brain CTA and perfusion with z axis coverage of up to 12.6 cm's.

**requires large capacity couch and Vitrea 4D Shuttle Perfusion application*

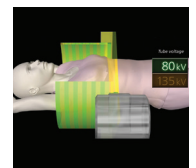


Shuttle Perfusion

Helical Dual Energy

Capture More Clinical Data

During a single helical scan acquisition, kV and mA can be automatically changed so that each anatomical voxel is sampled at 2 energy levels.



Helical Dual Energy

Follow us: <https://us.medical.canon>

@CanonMedicalUS

+CanonMedicalUS

Canon Medical Systems USA, Inc.

+CanonMedicalUS

Canon

CANON MEDICAL SYSTEMS USA, INC.

<https://us.medical.canon>

2441 Michelle Drive, Tustin CA 92780 | 800.421.1968

©Canon Medical Systems, USA 2018. All rights reserved. Design and specifications subject to change without notice.

Aquilion and Made for Life are trademarks of Canon Medical Systems Corporation. Google+ logo and YouTube logo are trademarks of Google Inc. TWITTER, TWEET, RETWEET and the Twitter logo are trademarks of Twitter, Inc. or its affiliates. LinkedIn, the LinkedIn logo, the IN logo and InMail are registered trademarks or trademarks of LinkedIn Corporation and its affiliates in the United States and/or other countries.

CTCSS12956US

Made For life